

indirectly by terminals and collaterals about the motor cells in the anterior column on the side opposite from their origin in the red nucleus. A few are said to pass down on the same side. Since the red nucleus is intimately related to the cerebellum by terminals and collaterals of the superior peduncle which arises in the dentate nucleus of the cerebellum, the rubrospinal fasciculus is supposed to be concerned

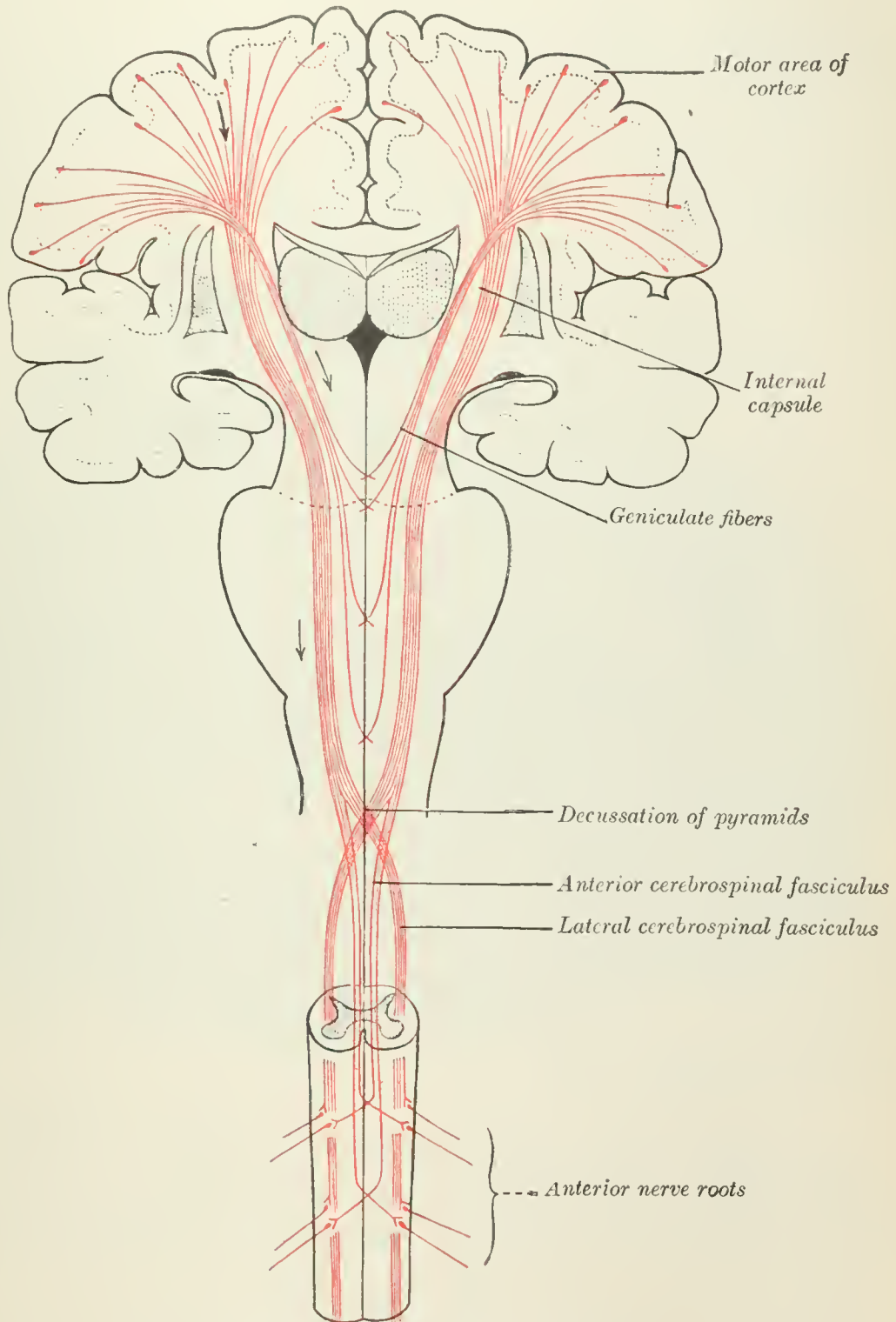


FIG. 764.—The motor tract. (Modified from Poirier.)

with cerebellar reflexes, complex motor coördinations necessary in locomotion and equilibrium. The afferent paths concerned in these reflexes have already been partly considered, namely, the dorsal and ventral spinocerebellar fasciculi, and probably some of the fibers of the posterior funiculi which reach the cerebellum by the inferior peduncle.

The **tectospinal fasciculus** arises from the superior colliculus of the roof (tectum)