

putamen. Its floor presents the following parts: the hippocampus, the fimbria hippocampi, the collateral eminence, and the choroid plexus. When the

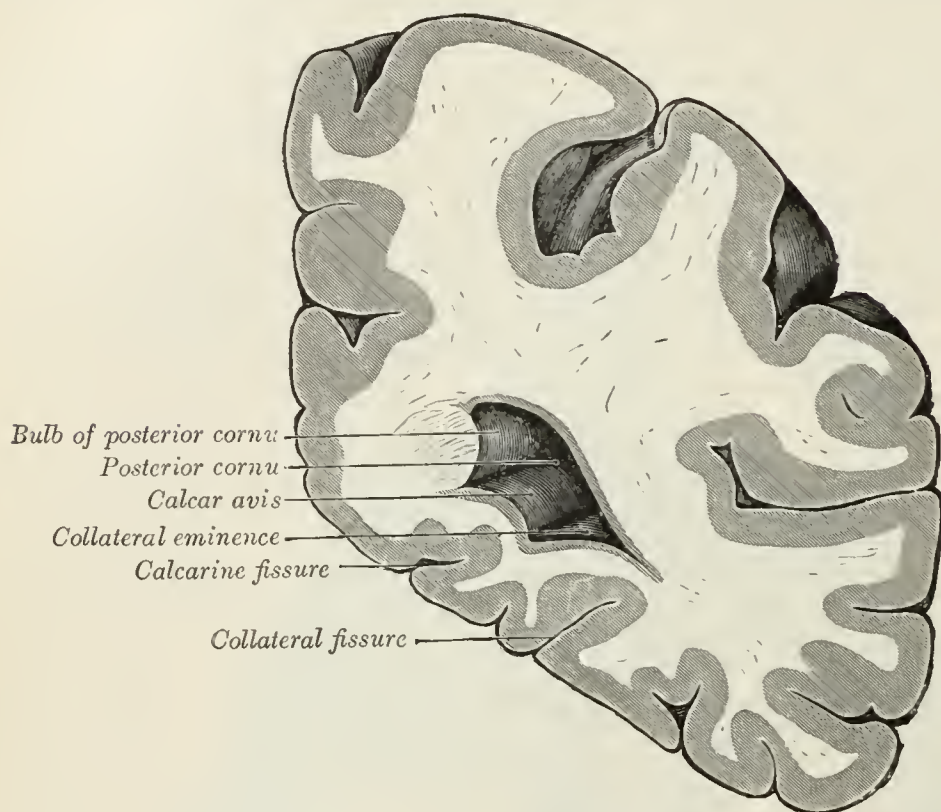


FIG. 738.—Coronal section through posterior cornua of lateral ventricle

choroid plexus is removed, a cleft-like opening is left along the medial wall of the inferior cornu; this cleft constitutes the lower part of the choroidal fissure.

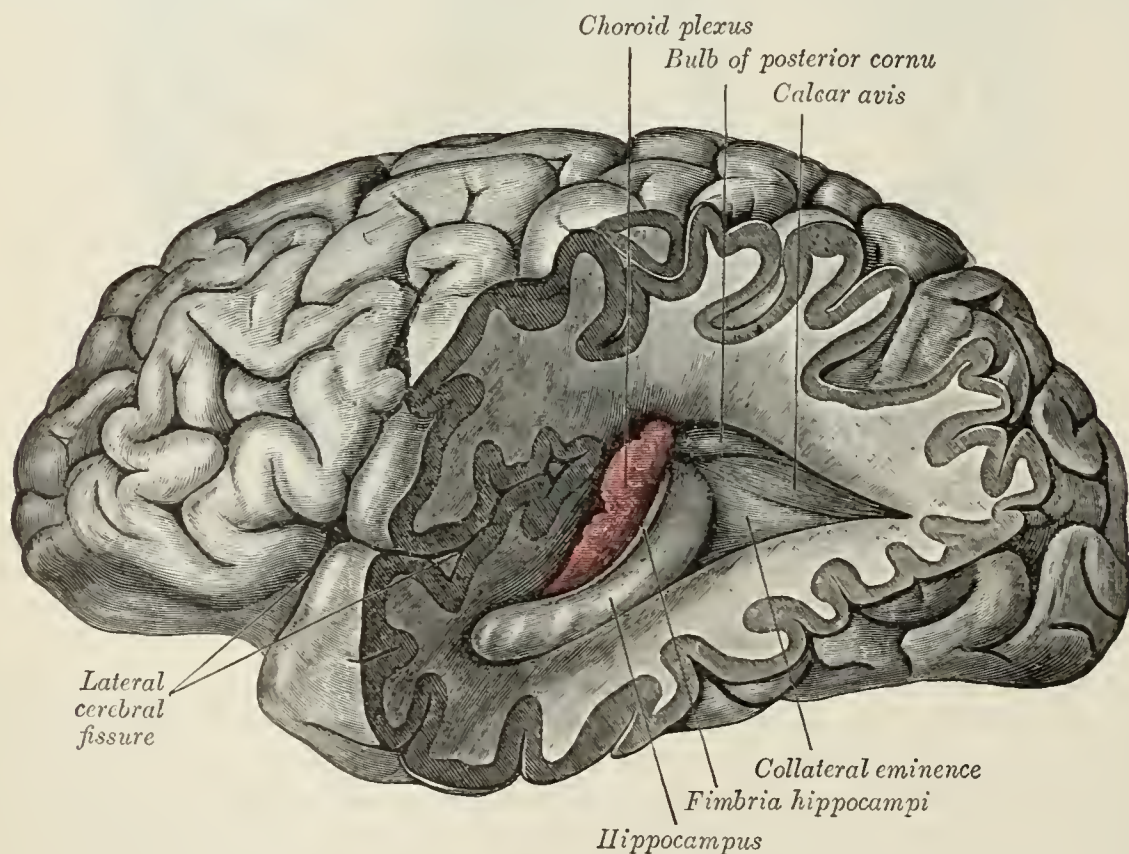


FIG. 739.—Posterior and inferior cornua of left lateral ventricle exposed from the side.

The hippocampus (*hippocampus major*) (Figs. 739, 740) is a curved eminence, about 5 cm. long, which extends throughout the entire length of the floor of the