

3. The dorsal nucleus (Figs. 696, 698), nucleus ala cinerea, often called the sensory nucleus or the terminal nucleus of the sensory fibers of the glossopharyngeal

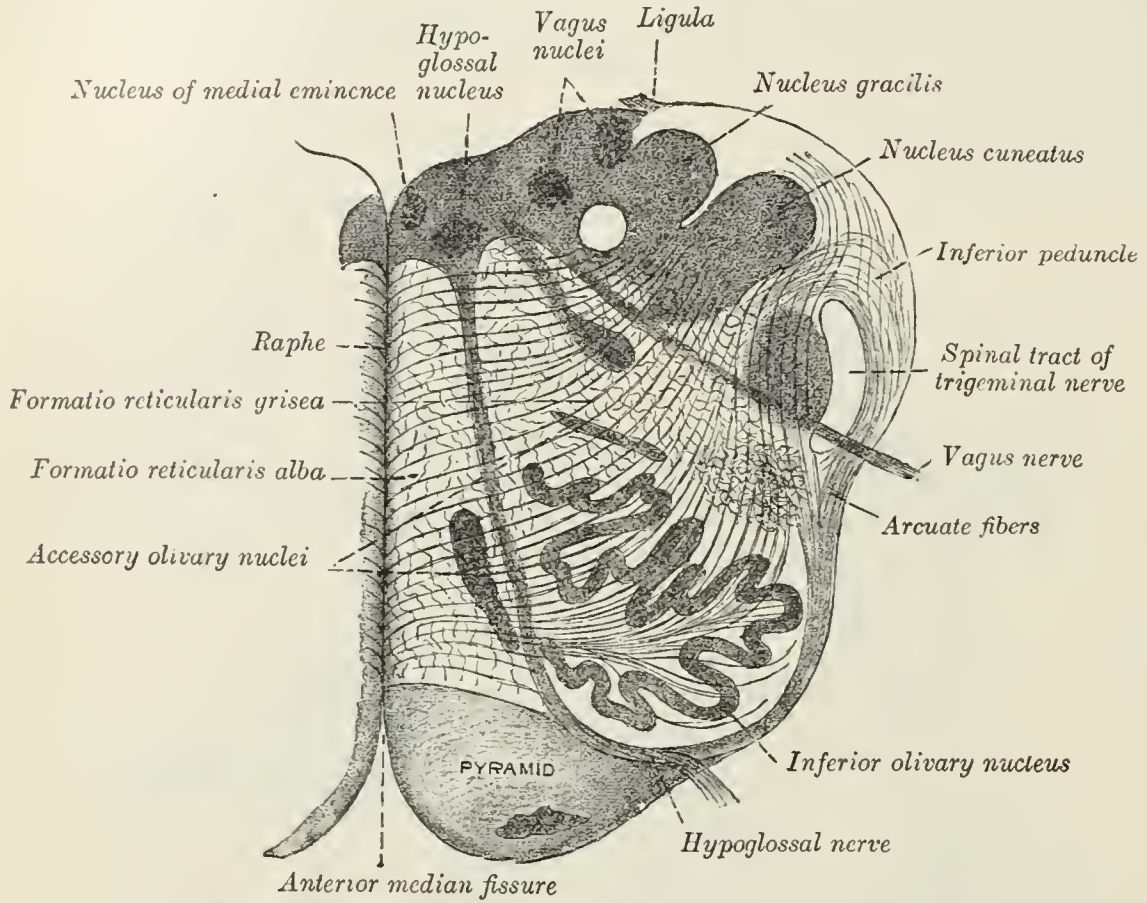


FIG. 694.—Section of the medulla oblongata at about the middle of the olive. (Schwalbe.)

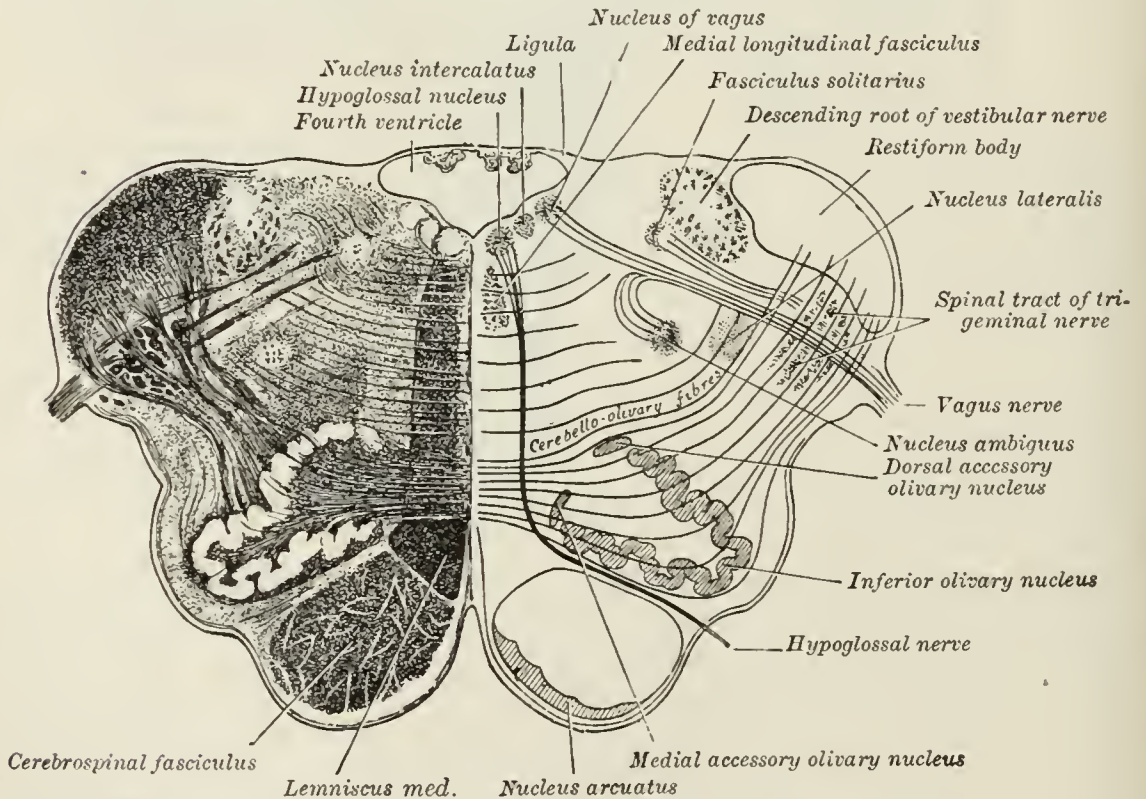


FIG. 695.—Transverse section of medulla oblongata below the middle of the olive.

and vagus nerves, is probably a mixed nucleus and contains not only the terminations of the sympathetic afferent or sensory fibers and the cells connected with them but contains also cells which give rise to sympathetic efferent or preganglionic fibers.